

Westbury Remodel

Client Goals:

- To make an existing home feel like their own prior to move-in.
- Eliminate dark finishes creating a renewed modernized look.
- Better use of space for growing family

Property Features/Statistics/Background/History:

Recently purchased home was in dire need of update and changes to accommodate owners clean back east look prior to occupancy. The home buyers loved this location and the close proximity to family activities. The backyard was perfect for their 2 children with room for more.

Remodel/Addition Solutions:

- Transformed office into a much needed additional bedroom
- Lowered formal living room dysfunctional ceiling and added beams creating a more comfortable cozy feel
- Brightened entire home with new cabinets, colors and lighting
- Glass and light accents added to upper cabinetry
- Installed new contemporary mantle with v-groove paneling to compliment original stone on fireplace
- Added modern plank ceiling in master bedroom
- Created a new custom closet system
- Freshened master bath
- Kids baths – kept tubs and tile, redid cabinetry, lights and mirrors
- The original wood floors were not only added on to, but re-stained to a new color that transformed them in to a more current look.
- Rebuilt outdated oak staircase and added fresh wainscoting on the stair walls
- Removed antiquated bar area in family room

Summary:

During the course of this renovation, the expectant homeowners received exciting life changing news. They were told that they were expecting twins! Everything paused as we learned of the changing needs of our clients. With 2 children under the age of 3, and 2 more coming – we needed to change our scope of work to better utilize their space. We worked closely with our clients establishing new solutions to meet all of their latest needs. Not only did we meet these needs, we changed the overall feeling of the home from outdated and dark, to light, clean and fresh with a consistent look throughout. Being from Boston, our clients wanted a back east look and feel. This look was flawlessly achieved with contemporary lighting and paint mixed with traditional cabinetry, floors and wainscoting throughout. This home now has a Pottery Barn/Restoration Hardware feel.

Westbury Remodel



Before



After

The dated staircase was brought to life with a fresh new look and feel. A back east look was achieved with the addition of this beautiful wainscoting.



Westbury Remodel

Before



Previous French Doors in
to a Library have been
replaced with a wall
creating a more functional
entry in to this home.



After



Westbury Remodel



Lowering the ceiling and adding beams in this room creates a more cozy and comfortable feel.



Westbury Remodel

Before

With amazing cabinetry, backsplash and countertops – this transformation from dark and dated to bright and new is flawless.



After

Backlit cabinetry with a stunning glass front add style and sophistication to this already beautiful kitchen. The subtle yet distinctive feature over the stove is a honed Catta Nova chair rail and the center is Catta Nova in a herringbone pattern.



Westbury Remodel



Before



The overall feeling of this room changed when we removed the dated TV niche and fireplace surround. The original stone on the hearth was complimented with a new mantle with V-groove paneling. The old dark beams were replaced with beautiful custom boxed beams.



After



Westbury Remodel



This is truly a GREAT room and is perfect for this growing family! The hardwood floors were transformed by refinishing and re-staining to a new more current look.



Westbury Remodel



Before

After

New modern plank ceiling, bench seat and an updated fireplace all help to give these homeowners the perfect place to relax.



A new high end master bedroom closet organization system was a must!

Westbury Remodel



Before



Completely Refreshed Bathroom - Gone is the brass! Updated faucets, lighting, mirrors, tile and refinished cabinetry give this master bath a much needed new style.



After



Westbury Remodel

Before

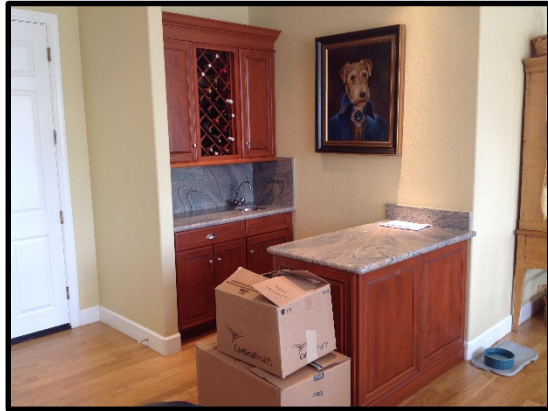


This library with French doors at the entry of the home was changed to a guest room. The opening to the left was closed off and a new entry in a different location was made. Not only do the home owners now have a more functional room. It created a more desirable entry to the home.

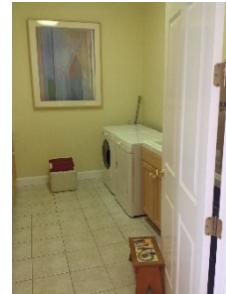
After



Westbury Remodel



Before



A new “kid drop zone” was formed when we eliminated the wet bar. This also created an entrance into the new guest room. This guest room was previously the library and the entrance was originally at the front entry.



After



Westbury Remodel



Before



After

The kid's baths were updated with new cabinetry, lights and mirrors while still utilizing the original tubs and tile surround for cost efficiency.



Before



After

Westbury Remodel



Before



New cabinetry and countertops make this laundry room both functional and stylish.



After

Westbury Remodel



The kitchen island is a stunning Honed Imperial Danby. The back countertops are a Ceasarstone with a subway set Catta Nova backsplash.



Westbury Remodel



Westbury Remodel

