

## **Ketchum Court Remodel**

---

### **Client Goals:**

- Updated, fresh look and feel to kitchen area without substantial rework of layout.
- Solve garage entry/laundry room issue and change a small guest room in to a new super laundry room.
- New study/hang-out area with desks for 3 growing kids.

### **Property Features/Statistics/Background/History:**

This home was built in 2000 in an upscale gated community. These clients are the second homeowners and had done minimal upgrades through the years. The home was typical for that era in that the entry from the garage was also the laundry room creating a non-user friendly space. The maple cabinets and TV niche had a very outdated feeling.

### **Remodel/Addition Solutions:**

- New kitchen, laundry room/office cabinetry
- Converted laundry room to mudroom – storage for kid's backpacks, coats, shoes, etc., built-in iPhone chargers for each child.
- Guest room became large laundry room and office, including wrapping area.
- Barn-door added for style and convenience.
- Matched and continued crown molding in kitchen area over cabinetry.
- Added a higher level of updated finishes.

### **Summary:**

We gave this home a new overall fresh look with updated finishes throughout the kitchen, mudroom and laundry area. A better flow from the garage into the home was created when we relocated the laundry. The homeowners now come through a fully functional mudroom that consists of individual spaces including iPhone charging outlets for each child. The new enlarged laundry is just off the mudroom separated by a stylish barn-door. This new laundry area also includes ice maker, dog food storage, gift wrapping area and office space transforming it into a multi functioning room. An additional guest room was converted into a kid friendly space with TV and desk areas for homework. We installed a focal point on the main wall utilizing reclaimed barn-board again bringing a more current look to the room. This was a wonderful transformation creating a very clean, crisp, new look.

## Ketchum Court Remodel

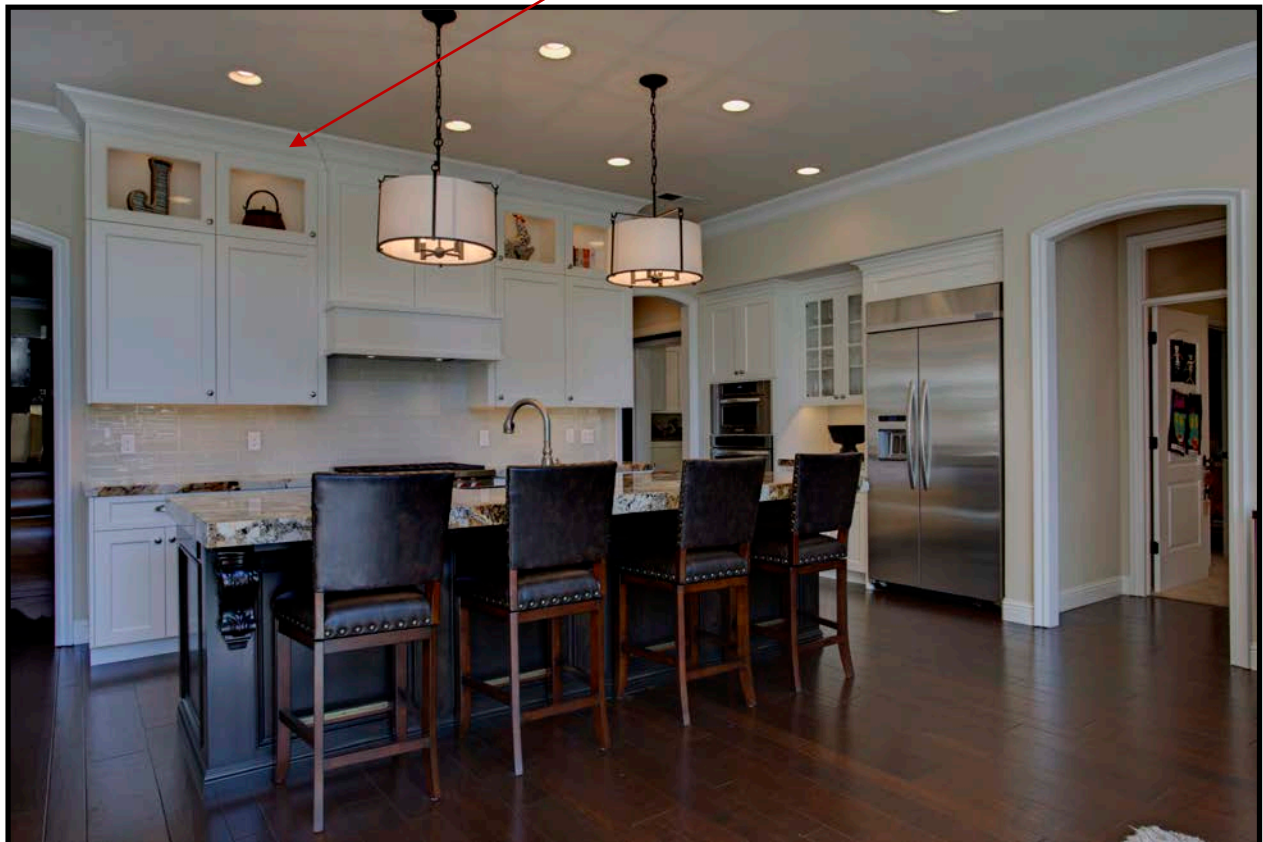
---



*Before*

A new fresh look and feel was achieved with new granite, backsplash and cabinetry extending to the ceiling. The existing crown molding was flawlessly continued over this new cabinetry.

*After*



## Ketchum Court Remodel

*Before*

The outdated TV niche was replaced with a wall to fit a large flat screen TV.



The new finishing's blended seamlessly with the original island and fireplace mantle.

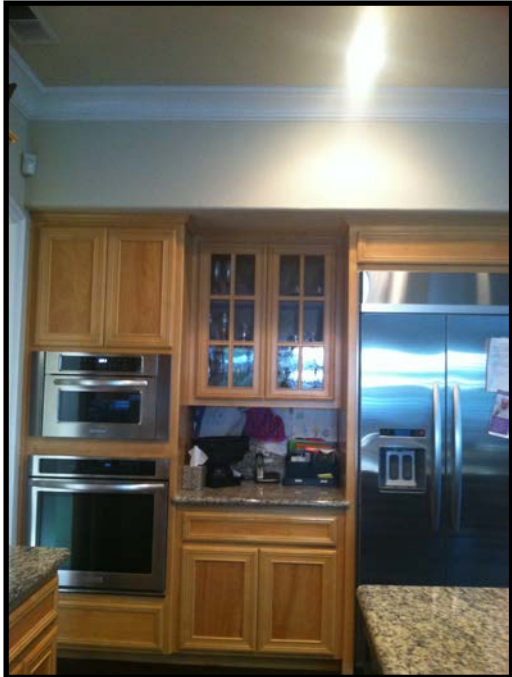
*After*





**Ketchum Court Remodel**

---



*Before*



*After*



## Ketchum Court Remodel



*Before*



Great conversion from laundry room to much more user friendly mud room! The wall was moved in and a stylish barn-door was added separating the new mud room from the new laundry area.



*After*



Individual cubbies for the kids including their own charging stations makes this a more practical use of space.

**Ketchum Court Remodel**

---



*Before*



*After*



**Laundry Bins   Gift Wrapping   Ice Maker**



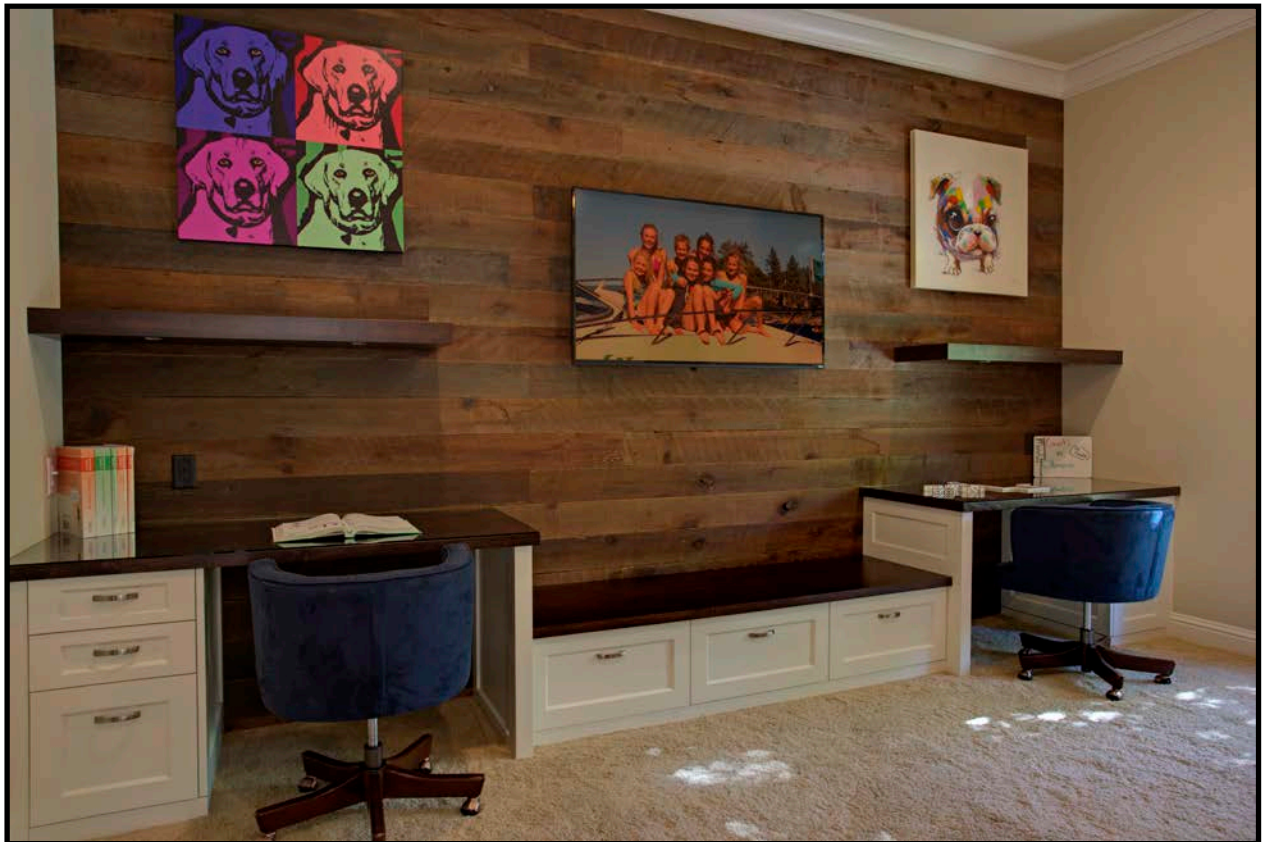
## Ketchum Court Remodel

---



New cabinetry and the use of barn-board transforms this study/hang-out area into a comfortable modernized space.

*After*



**Ketchum Court Remodel**

---



**Great Room**



**Ketchum Court Remodel**



**Honed Basalt Stone Apron Farmhouse Sink**



**Patagonia Granite and Wolf Range**

**Ketchum Court Remodel**

