

Oak Leaf Remodel

Client Goals:

- Replace a home that burnt down with a very similar home.
- Same look and feel with slight improvements to original layout and floor plan.
- To recreate the home they loved and a place that they would want to come back to after complete devastation.

Property Features/Statistics/Background/History:

These homeowners purchased this property and custom built their home years ago. Just 6 weeks after the completion of a new kitchen remodel, their home caught fire and burned to the ground. The only thing left was a portion of their garage, their pool and landscaping. Everyone was safe, however, the home was completely destroyed.

Remodel/Addition Solutions:

- Kitchen expanded – 1' wider for easier passage around larger island
- Laundry and Bath switched
- Larger office area within mudroom
- Removed steps – house had many levels
- Had to work within existing footprint – front door needed to land on brick entry
- Poured extra concrete between home and garage to make one level – removing steps
- New closet in mudroom
- Switched master suite with other bedrooms to capture view

Summary:

The homeowners loved their home and in particular loved their location. Rebuilding was a must! The garage foundation was saved along with the pool and landscaping. The homeowners wanted their same look and feel of their original home but also wanted a few improvements. We used the original footprint and needed to rebuild within these constraints. The exterior brick landing leading to the front door was significant to our rebuild as we needed the front door to land in the same place as it was before. Minor changes were made to the original plans such as raising ceilings and enlarging the kitchen. In the original home, the downstairs had many levels that we removed. Upstairs, to capture a better view for the homeowners, we interchanged the master bedroom and bath with the 2 other bedrooms and bath. The office was pushed out an additional 2' as well. A previous downstairs sunroom is now a solarium/future junior suite. The downstairs laundry and bath were switched for better functionality as well.

Oak Leaf Remodel



Before Fire

The original plans were used for the rebuild. Minor improvements were made, however the overall look and feel of the home remains.



After

Oak Leaf Remodel



Before Fire

The picture below shows the devastation to the original home.

A better layout was created on the upper floor by moving the master to the opposite side of the home. Large picturesque windows were incorporated to capture the views.



After Fire



After

Oak Leaf Remodel



The previous sunroom add-on is now a permanent part of the home. It is currently being used as a solarium/play area for the grandchildren, but will become a Jr. Master Suite for the homeowners for future use.



Oak Leaf Remodel



After Fire



The posts on the front entry stairs survived the fire, were saved and reused in the new build.



After

Oak Leaf Remodel



Prior to the fire, the home had many levels.
When it was rebuilt – the levels were
eliminated creating a much better flow
throughout the home.



Oak Leaf Remodel



The picture to the left shows the home remodel just prior to the fire. We made minor changes to give it a more polished look while maintaining the homeowner's layout preferences.

Before Fire



After

Oak Leaf Remodel

Before Fire



The layout remained somewhat the same. The back wall was moved out 1', the ceilings raised and a larger island was built. The larger overall area allowed for more cabinets with the addition of glass in the top to help bring in much needed light.



After

Oak Leaf Remodel



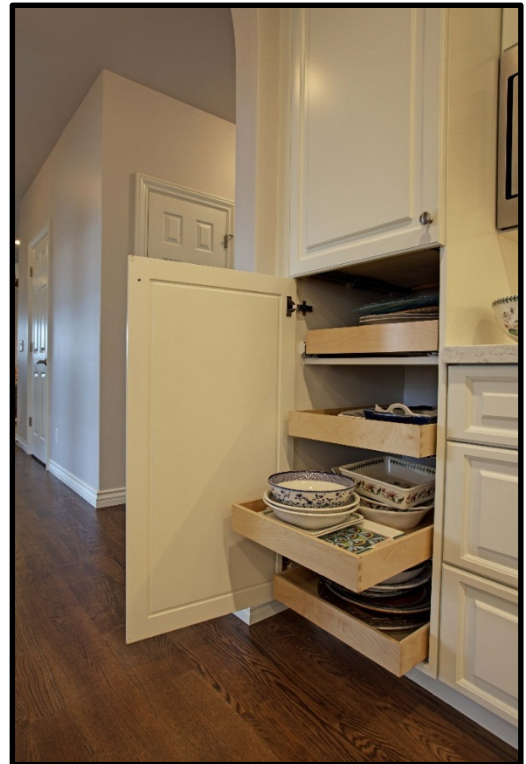
The new island has a gorgeous Blue Flower granite slab. The perimeter counters are a solid surface LG Viatera Minuet with a white matte subway set backsplash.



Oak Leaf Remodel



The cabinets were upgraded and now include custom drawers along with custom pullouts.



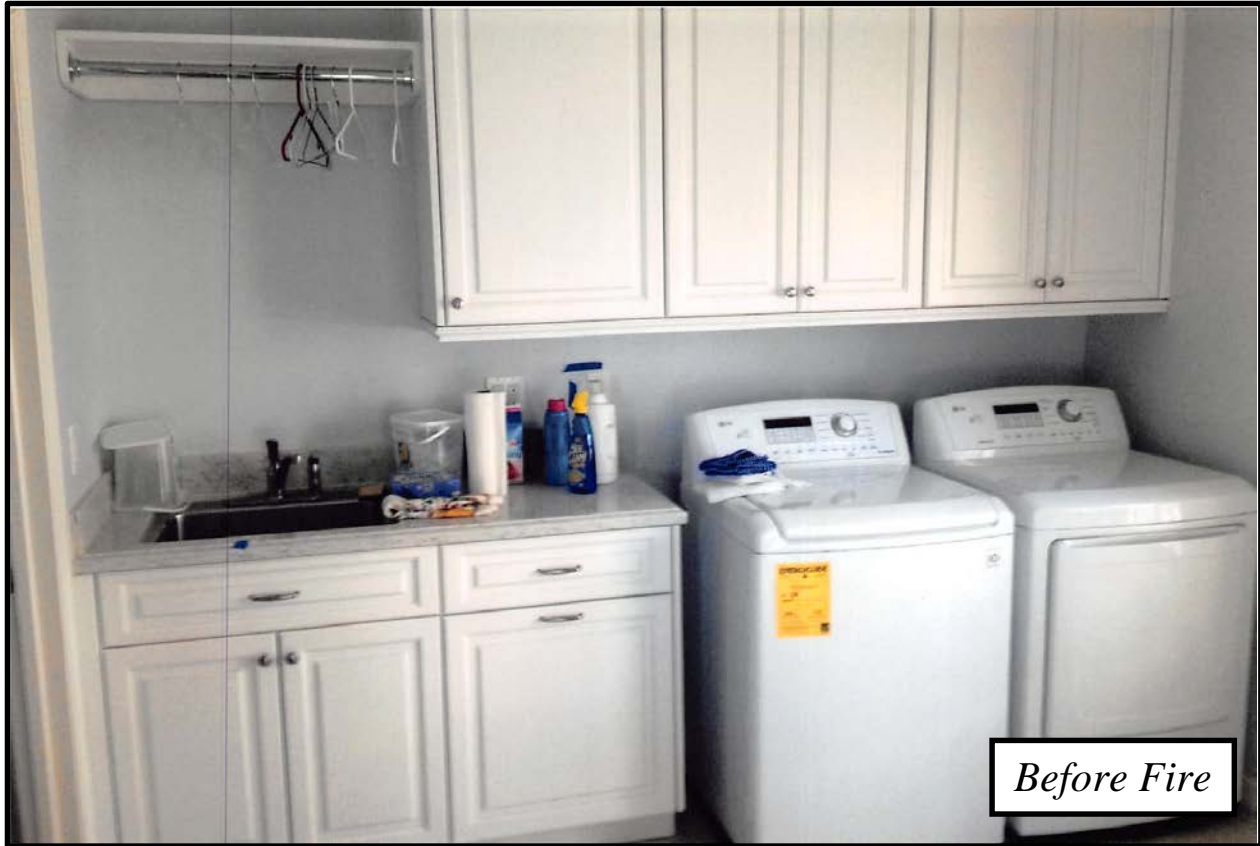
Oak Leaf Remodel



By relocating a few walls, the homeowners now have a larger more functional office space.



Oak Leaf Remodel



Laundry Room



Oak Leaf Remodel



Before Fire

It was important to preserve whatever we could from the original home. A planter box, lemon tree, and some of the original brickwork was saved and worked around while building the new and improved decks.



After

Oak Leaf Remodel



The music room above leads into the solarium. The solarium, below, is currently being used as a play room for the grandchildren with plans for it to become a Jr. Suite for the homeowner's future use.



Oak Leaf Remodel



Dining Room



Oak Leaf Remodel



Living Room

The wood floors in the home are a stained white oak using a special color blend to coordinate with all of the other woods in the home.



Oak Leaf Remodel



A stunning entry welcomes you into this home. A glass designer was used for the special entry door sidelites. These glass pieces were designed to fit the scale of the window openings. The chandelier is unique in that it has a motorized lift for ease of cleaning.



Oak Leaf Remodel



Special care was taken when making the selections for the homeowner's office as he wanted a warm, cozy, traditional office. This was accomplished with the use of darker built-ins, deeper color carpeting and wall color.

Oak Leaf Remodel



The master bedroom was enlarged when it was moved to the opposite side of the home.

The master bath counter and backsplash is a cararra marble slab and the floor is a porceline tile that blends perfectly. The shower has a waterfall design accent in blue tones that are carried in from the master bedroom.



Oak Leaf Remodel



Guest Room and Bath



Oak Leaf Remodel



Additional storage was added throughout the new build. A larger more user friendly upstairs patio was created as well.



Oak Leaf Remodel



Trex Deck in the new spiced rum color was used for all of the new decks. The decks were expanded to provide the homeowner's with more areas to entertain.



Oak Leaf Remodel



The large door on the back of the garage was one of the few things saved from the original home.